

DOUTHWAITE HALL



HUTTON LE HOLE | YORK | YO62 6UF



DOUTHWAITE HALL

HUTTON LE HOLE | YORK | YO62 6UF

Kirkbymoorside 3 miles, Helmsley 6 miles, York 26 miles

A glorious grade II listed country house, with beautiful accommodation in a spectacular and tranquil parkland setting in the North Yorkshire Moors National Park.

In all 33 acres

CROFT

RESIDENTIAL

TOBY@CROFTRESIDENTIAL.CO.UK

01904 238222



ACCOMMODATION AND AMENITIES

Main House

Ground Floor

Entrance hallway, drawing room, billiard room, family room, living kitchen, preparation kitchen, dining room, sitting room, garden room, laundry, boot room, rear entrance hallway and wc/cloakroom. One wine cellar and two additional cellars.

First Floor

Master bedroom with dressing room and large ensuite, guest bedroom with dressing room and ensuite. Three further bedrooms with ensuites. Two additional bedrooms and one bathroom.

Second Floor

Three bedrooms, two bathrooms and a sitting area.

Cedar Lodge

Sitting room, dining room and kitchen.

Two bedrooms and house bathroom.

Private garden, parking and outbuilding.

Outside

A fabulous range of traditional barns, outbuildings and stores. Piggery, stables and tack room. Lake house, wendy house, tennis court, green house, potting shed and fuel stores.

Manicured garden, parkland, lake and woodland.

In all about 33 acres









INTRODUCTION

Douthwaite Hall is one of the finest country houses in North Yorkshire. Nestled away in gorgeous rolling countryside the property offers privacy, views, tranquility and superb living space. The ground floor has beautifully proportioned reception rooms that can be used daily or for the more formal occasions. On the first and second floors are the bedrooms, with the majority having ensuite bathrooms.

Cedar Lodge offers excellent ancillary space perfect for dependent family or staff.

The outbuildings and barns are traditional in style and have huge scope for conversion in to living space, office space or potentially leisure facilities.

A feature of Douthwaite Hall are the gardens and grounds which combine sweeping lawns, a number of terraces, lake, woodland and parkland. Breathtaking to say the very least.



ENVIRONS

Douthwaite Hall is nestled between the market towns of Kirkbymoorside and the picturesque village of Hutton le Hole and is only 6 miles from Helmsley. This area is quintessential North Yorkshire countryside comprising of the Howardian Hills Area of Outstanding Natural Beauty and North York Moors National Park.

Helmsley is a beautiful market town with a selection of shops, hotels, public houses, post office, butchers, delicatessens, doctors surgery, cafes and churches as well as a magnificent ruined medieval castle. There are a number of highly regarded schools both state and independent nearby.

The city of York is 26 miles south which has regular connections to London, many making the journey in under 2 hours.













ADDITIONAL INFORMATION

Services

We are advised the property has mains water and electric. The drainage is private and central heating is oil fired.

Tenure

Freehold

Local Authority

Ryedale District Council

www.ryedale.gov.uk

Viewing

Please contact Croft Residential

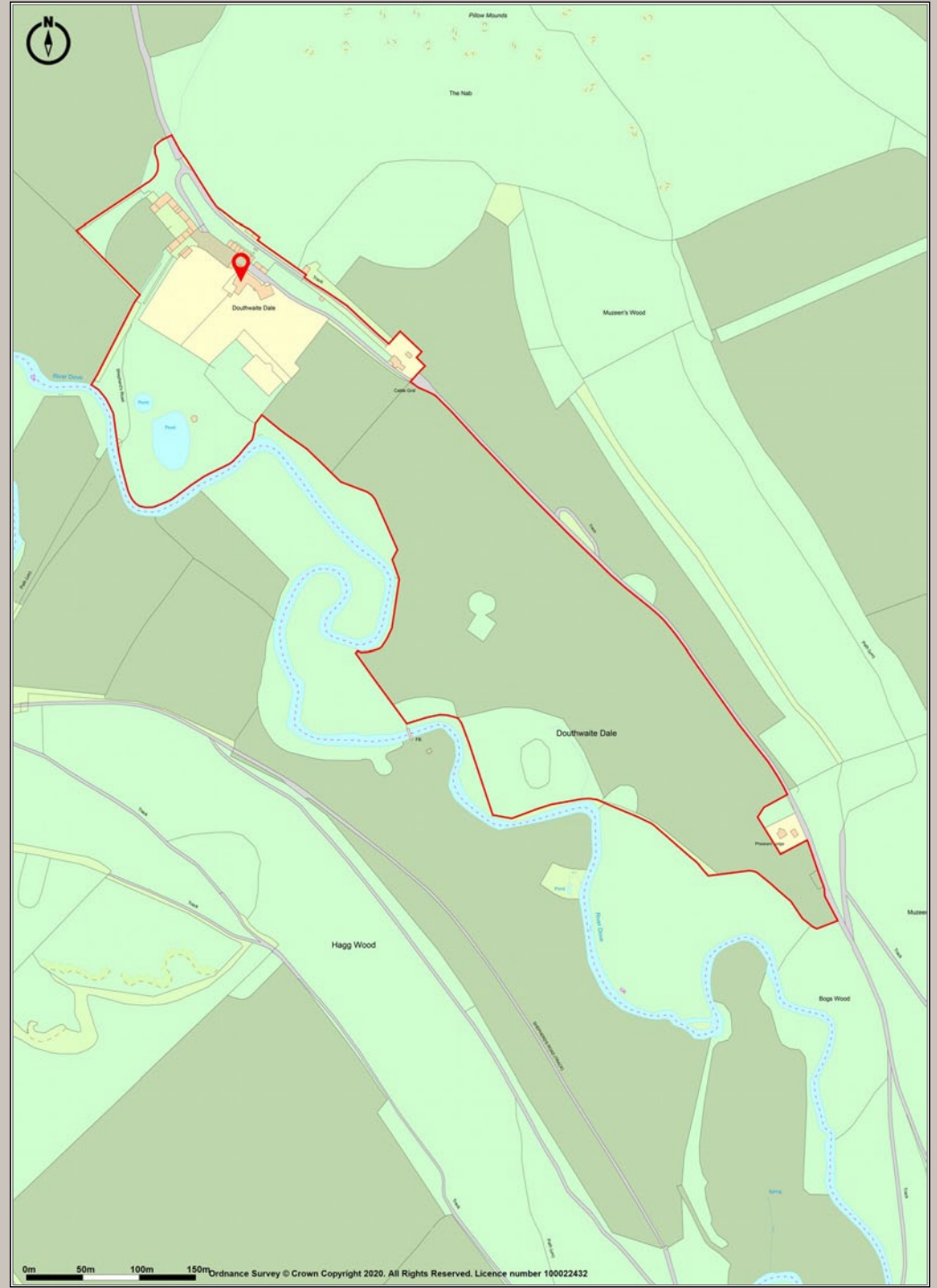
01904 2388222

toby@croftresidential.co.uk

07725 030377



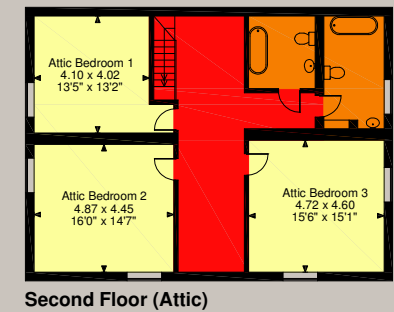
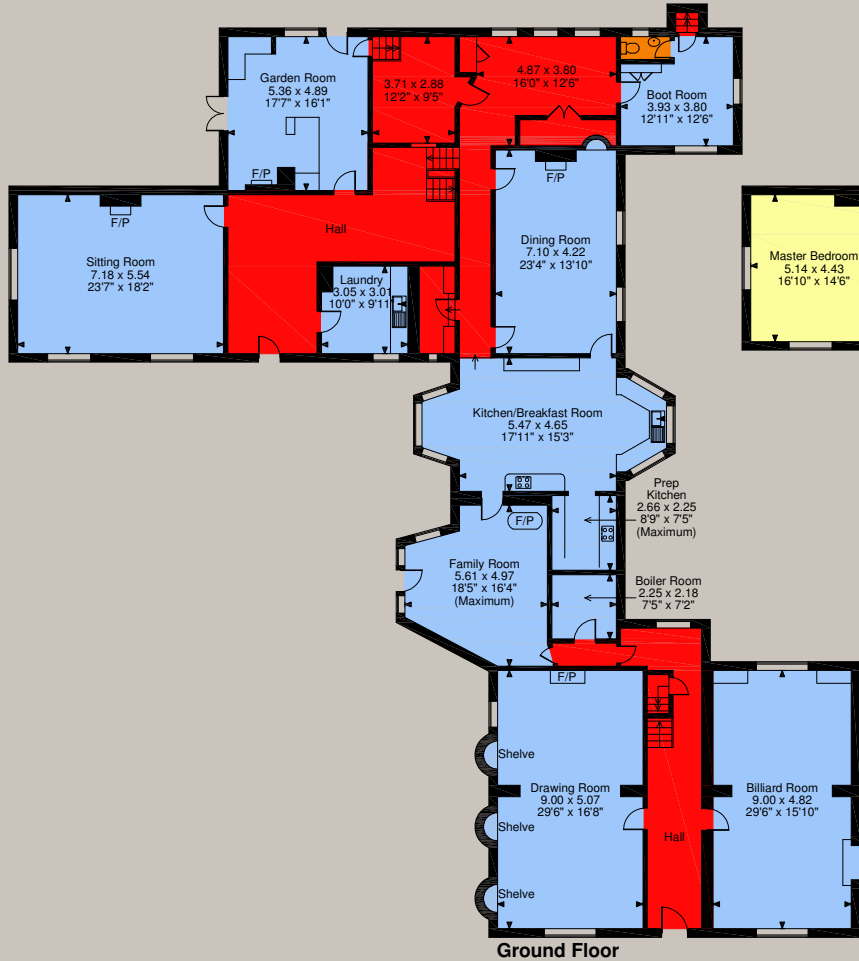
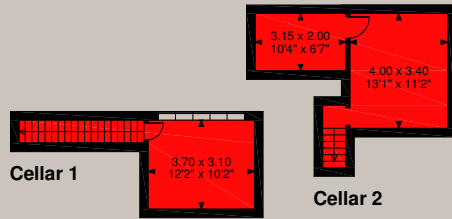
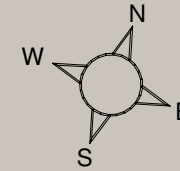




Douthwaite Hall, York

Approximate Gross Internal Area

Main House = 9640 Sq Ft/896 Sq M



FOR ILLUSTRATIVE PURPOSES ONLY - NOT TO SCALE

The position & size of doors, windows, appliances and other features are approximate only.

□ □ □ □ Denotes restricted head height

© ehouse. Unauthorised reproduction prohibited. Drawing ref. dig/8430317/LWA

